

Implant Case Scan Precautions



2024/07/12



1

Scanning Process

Scanning procedures

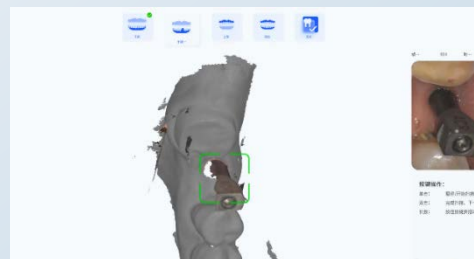
01

Working Arch



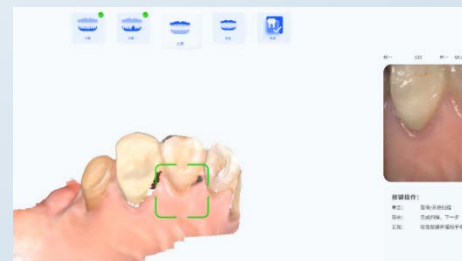
02

Scanbody



03

Opposite Arch



04

Occlusion



2

Data Judgment



1

Scanbody



2

Adjacent teeth



3

Gingival cuff



4

Occlusion

4 aspects
for data
judgement

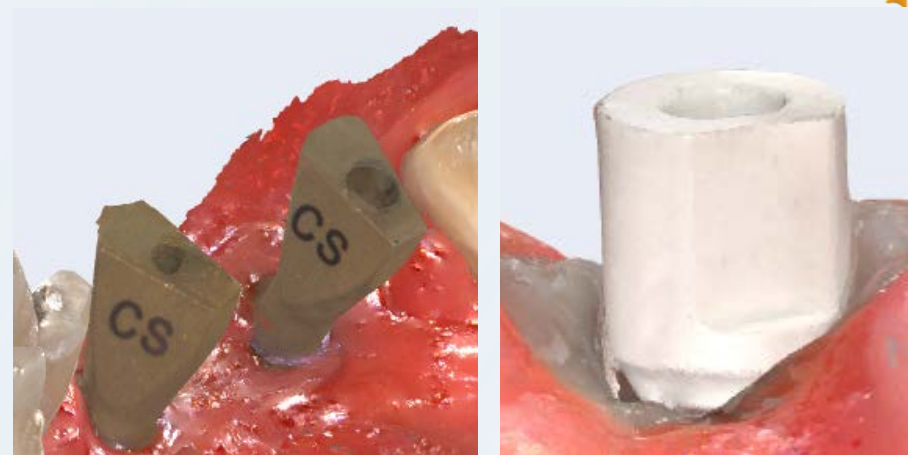
3

Precautions & Common Questions

Scanbody

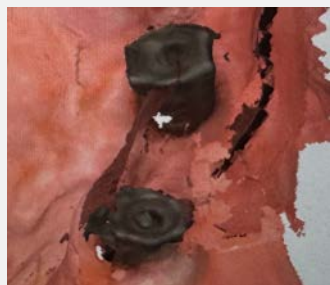


Non-feature area

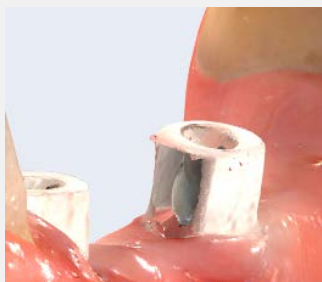


When installing the scanbody, place the feature area in the visible field of view.

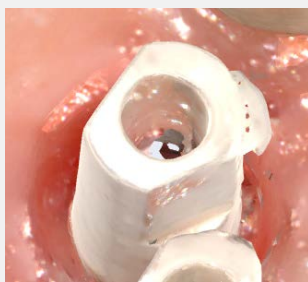
Scanbody



Deformation



**Incomplete
feature surface**



**Double-layer
scan data**

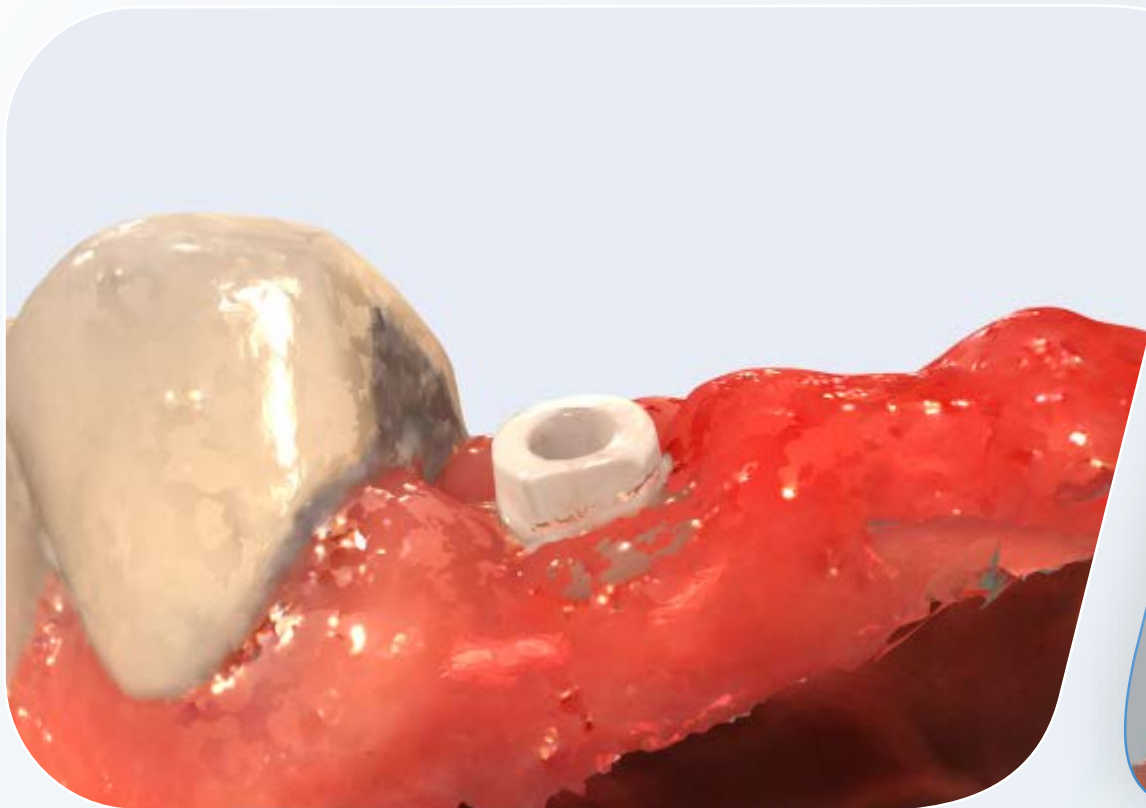


**Deformation/Incomplete feature
surface/Double-layer scan data**



**The scanbody is clear and complete, with no double-layer
scan data or deformation, and no saliva, blood, etc.**

Scanbody



The scanbody is too short and the gums cover most part of it.



When the gum is deep, choose longer scanbody.

Adjacent teeth

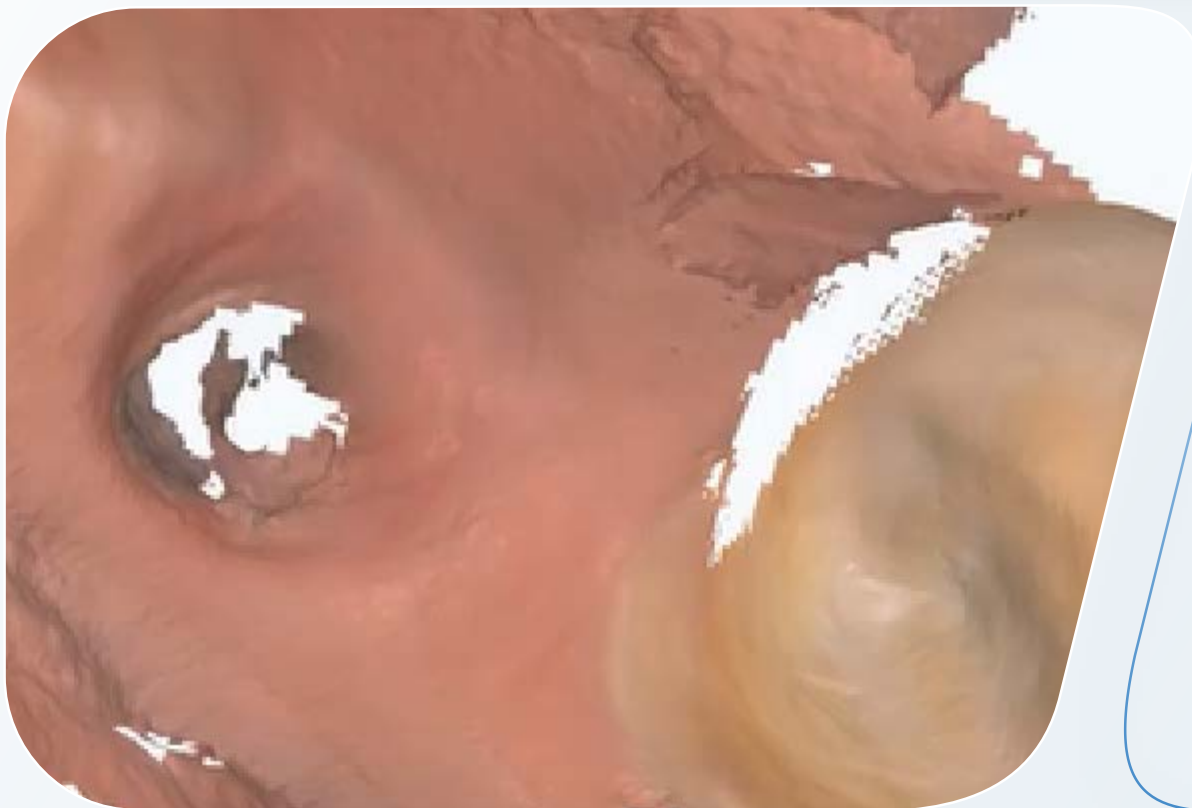


Wrong alignment and double-layer data of adjacent teeth.



Rescan when there is wrong alignment and double-layer data.

Adjacent teeth

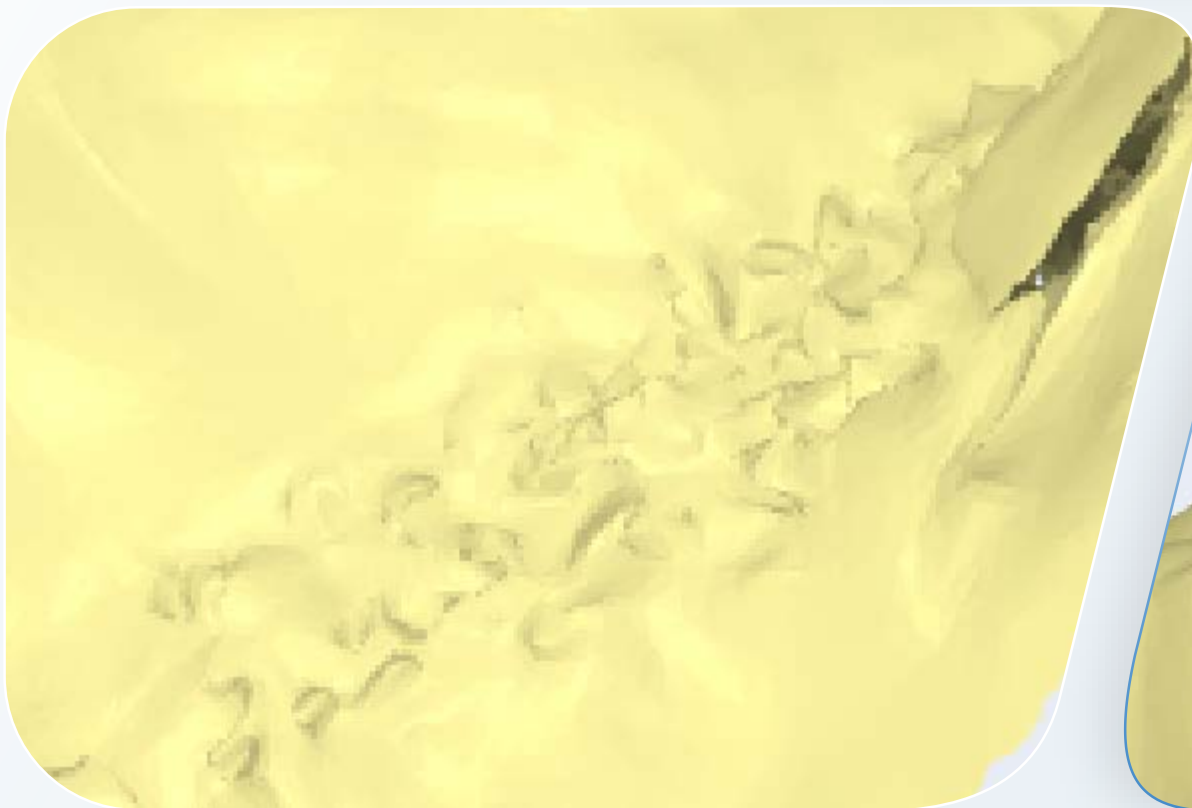


Incomplete adjacent teeth.



Adjacent teeth should be scanned completely as much as possible, and contact areas must be scanned totally complete.

Adjacent teeth



Abnormal adjacent teeth data.

(Caused by blood or saliva on the surface)

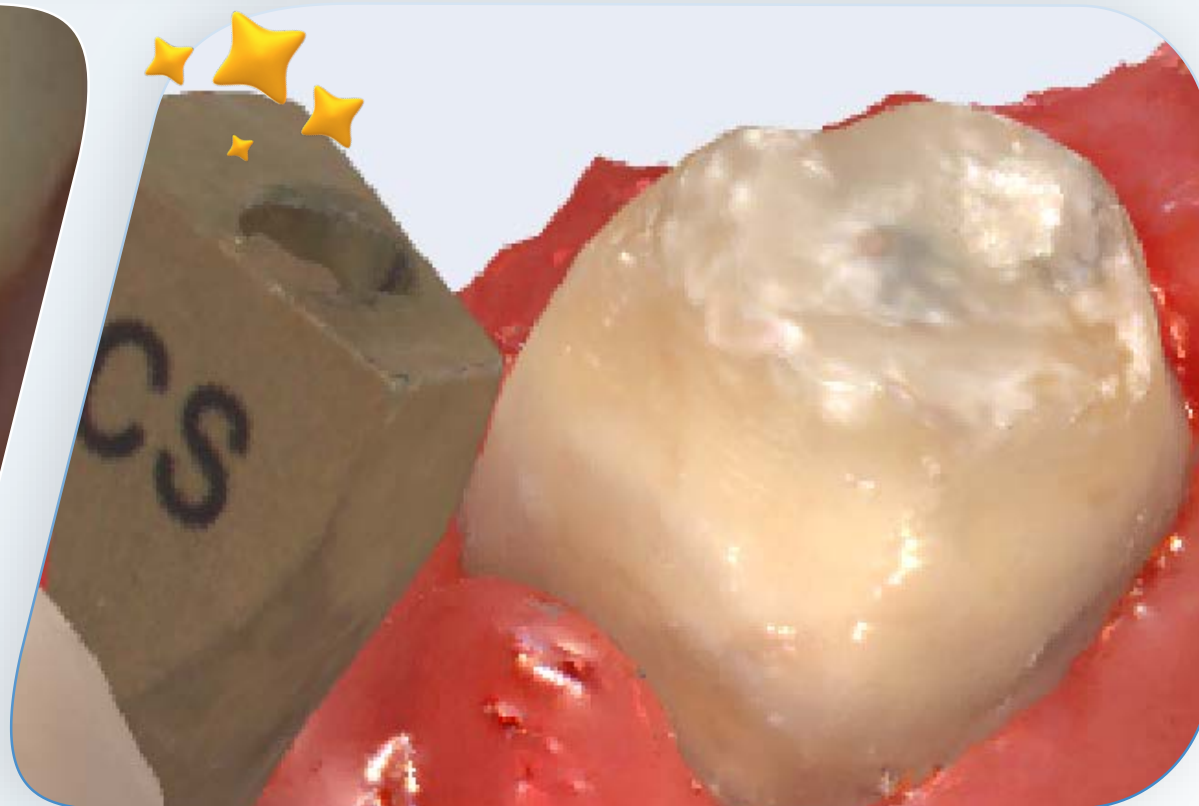


Clean the blood or saliva on the surface and rescan.

Adjacent teeth

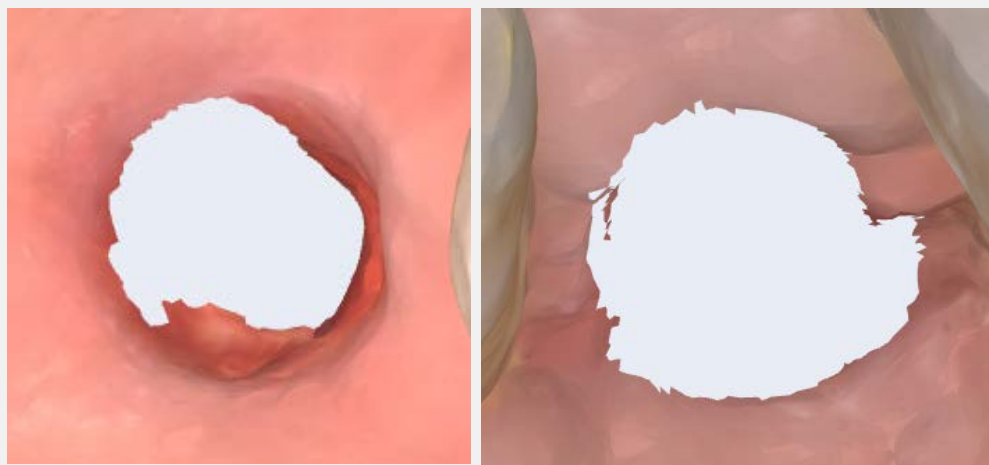


Adjacent teeth caries affect the adjacency relationship.



When the adjacent teeth caries are severe, it is recommended to perform scan after treatment.

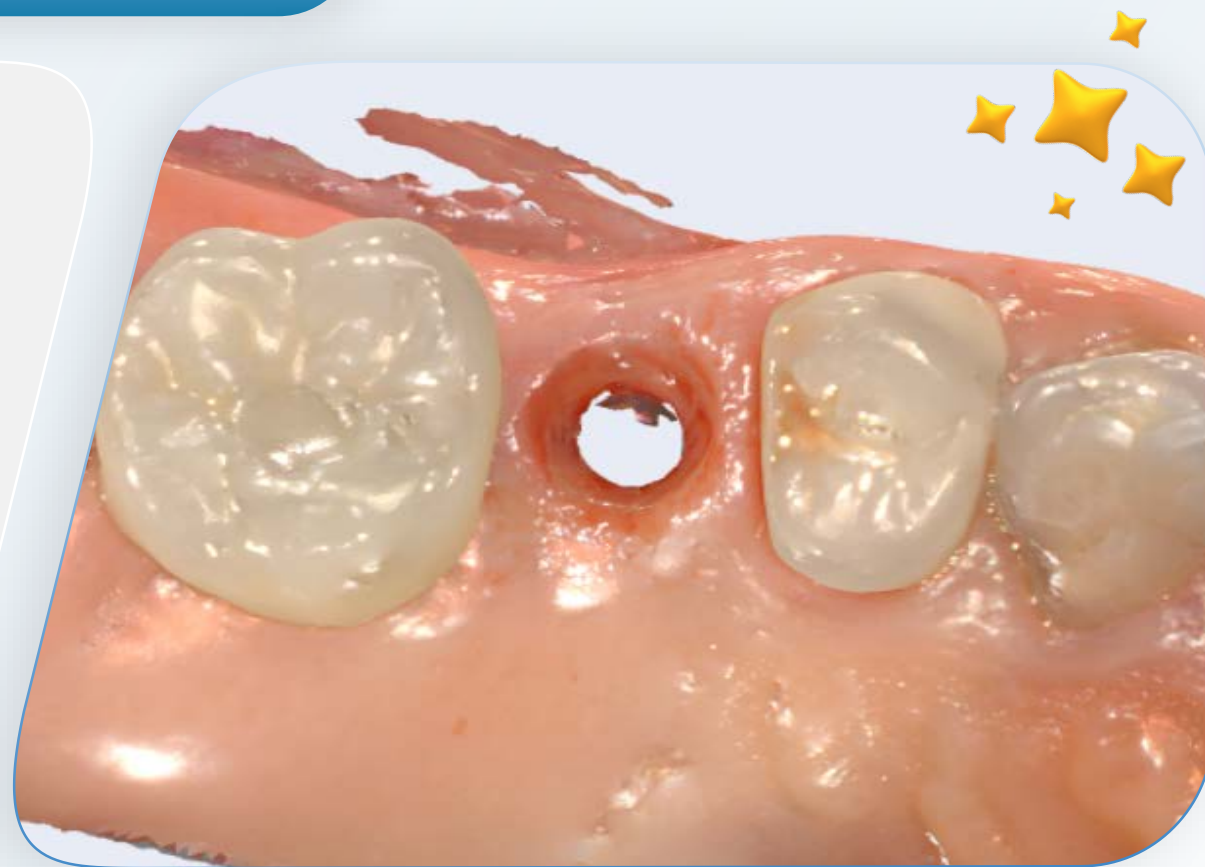
Gingival cuff



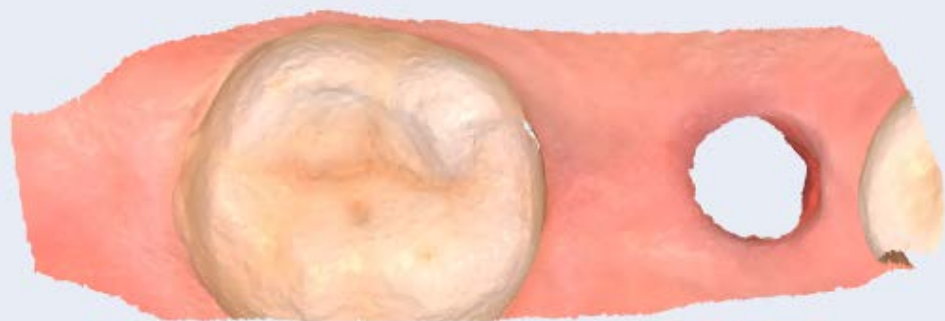
**Incomplete gingival cuff/
no gingival cuff data**



**Take off the healing abutment when scan, and
make sure the whole gingival cuff is scanned.**



Gingival cuff



Gingival data is not enough.



Get as much gingival data as possible.

Occlusion

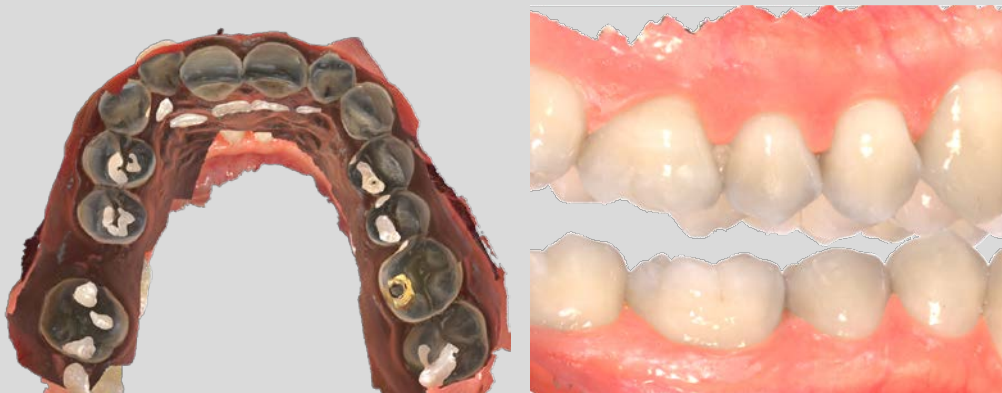


The scanbody is too long, affecting the occlusion relationship.



Take off the scanbody when scan the occlusion.

Occlusion

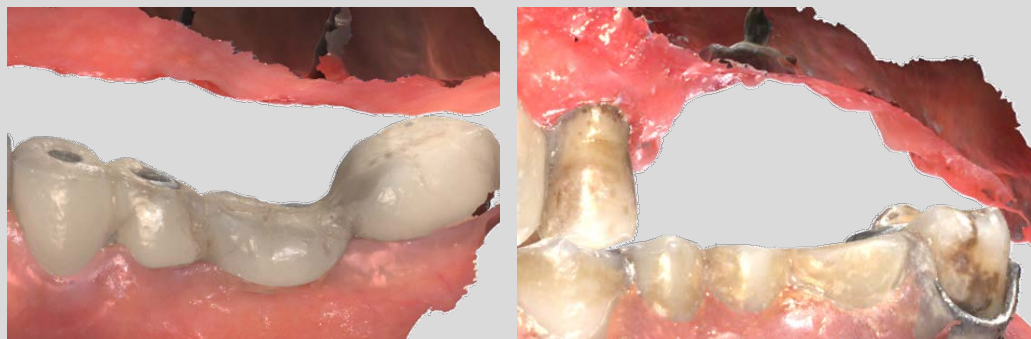


Wrong occlusal relationship



Rescan the occlusion when the relationship is wrong or the alignment is abnormal.

Occlusion



Free end data missing caused inaccurate occlusal relationship.



Scan area with complete upper and lower jaw or use bite wax to confirm the occlusal relationship.



Qualified Scan Data

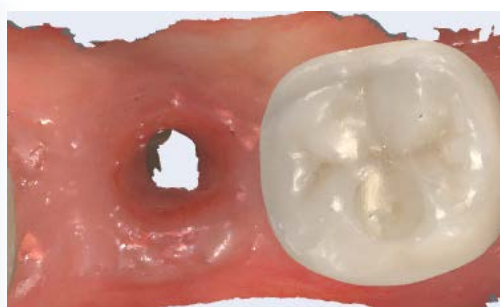
What kind of scan data is qualified?

Scanbody



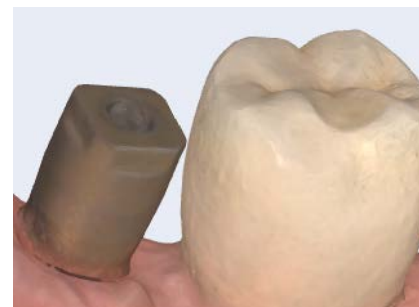
- ✓ The scanbody is clear and complete, with no double-layer scan data or deformation, and no saliva, blood, etc.
- ✓ The characteristic surfaces are clear, no double-layer data or deformation, no saliva, blood, etc.

Gingival cuff



- ✓ Complete and clear gingiva cuff
- ✓ Around 4mm deep

Adjacent teeth



- ✓ Adjacent teeth are intact and there is no saliva, blood or caries.

Occlusion



- ✓ Correct occlusal relationship
- ✓ Slight gap or collision of upper and lower arch can be adjusted manually.

Thanks



Scan and Follow BLZ Dental User Group!