

# Super-Snap X-TREME FINISHING & POLISHING & Super-Snap



# Superior finishing and polishing disks

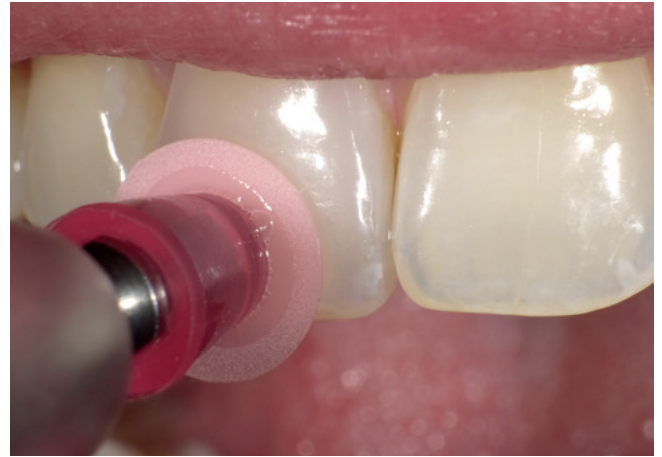
## Super-Snap X-Treme

### Advanced 3D technology

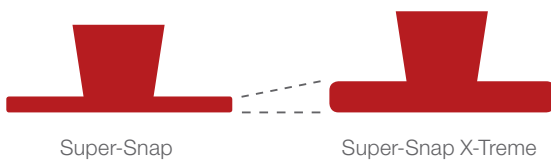
The Super-Snap X-Treme disks – an enhancement of the original green and red Super-Snap disks – feature a longer service life and an increased stiffness, while also maintaining their well-known flexibility in interproximal areas.



Polishing with Super-Snap X-Treme standard disk



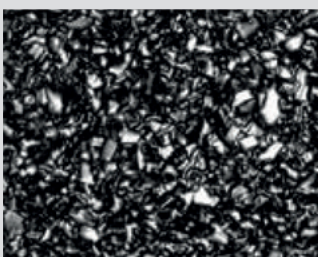
Super-polishing with Super-Snap X-Treme mini disk



The Super-Snap X-Treme disks, available in mini and standard size, are coated on both sides. They are thicker than the Super-Snap disks so that higher contact pressure can be used during polishing. The added thickness creates a greater tactile feel and produces higher gloss results.

- Enhancement to the original green and red Super-Snap disks
- Extra thick to increase stability, tactile feel and durability while also maintaining flexibility in interproximal areas
- 3D coating helps to avoid surface clogging
- Simplified 2-step polishing procedure
- Achieves X-Treme gloss with smooth surfaces
- Coated on both sides with alumina
- 2 sizes: standard (12 mm) and mini (8 mm)

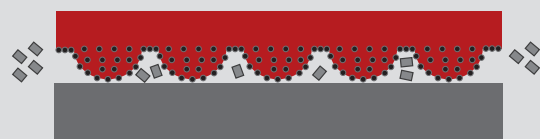
### Super-Snap X-Treme surface grit, magnification x400



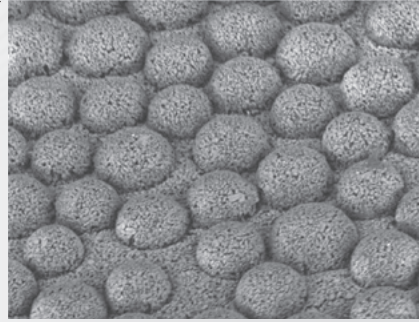
Green disk - fine  
Polishing



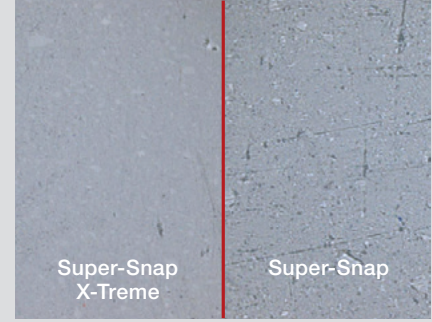
Red disk - superfine  
Super-polishing



Super-Snap X-Treme's red 3D alumina grits allow space for ground debris to be removed during polishing. This helps to prevent secondary scratches and clogging.



400 x 200  $\mu\text{m}$   
semispherical shaped 3D coating

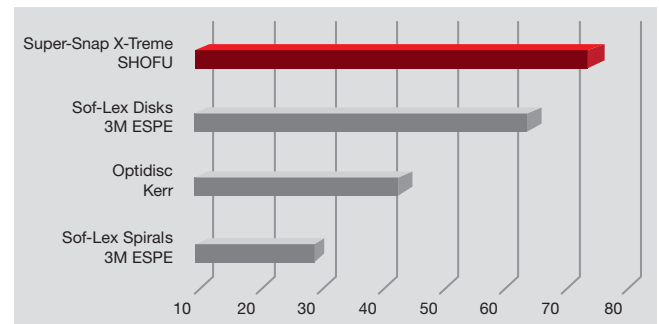


Tooth surface after polishing with red disk  
(superfine grit)

## Achieve a high-gloss polish – avoid surface clogging

The red Super-Snap X-Treme disks are exceptional as they feature an innovative 3D coating. Between the uniformly distributed semispherical structures made of alumina particles, debris is collected and removed. This prevents the disk from clogging or secondary scratches caused by polishing dust. Thereby a natural gloss is achieved.

Gloss level (Gs)



Source: R&D SHOFU INC., Japan  
All trademarks belong to their manufacturers.

## Super-Snap

### Step-by-step to the best composite restorations

Super-Snap, the 4-step disk system, is designed for easy, fast and safe contouring, finishing and polishing of all microfilled and nano-hybrid composites.

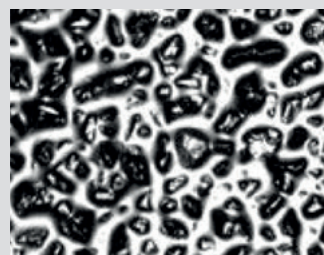
The disks are coated with silicon carbide or alumina and are manufactured without a metal centre, thus avoiding gouging and discolouration of the composite or enamel. They are available with the safe side down, safe side up and coated on both sides and come in standard ( $\varnothing$  12 mm) and mini ( $\varnothing$  8 mm) size.

- Colour coded by grit size: coarse (black), medium (violet), fine (green) and superfine (red)
- Highly flexible; ideal for interproximal use
- No metal centre – eliminates risk of gouging
- Elastic shank mount for easy placement on the mandrel

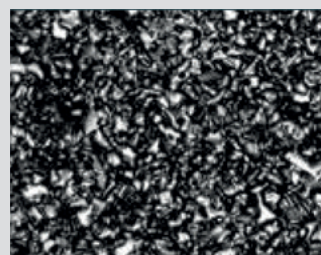
### Super-Snap surface grit, magnification x400



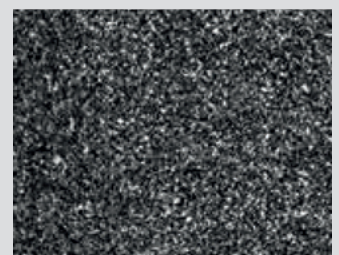
Black disk - coarse  
Contouring



Violet disk - medium  
Finishing



Green disk - fine  
Polishing



Red disk - superfine  
Super-polishing

# Order information

## Super-Snap X-Treme

	Polishing		Super-polishing	
<b>Super-Snap X-Treme</b>				
50 pcs. / box	L511	L531	L512	L532
Colour / grit	Green / fine		Red / superfine	



### Super-Snap X-Treme

#### Disk Kit

80 disks each Super-Snap / Super-Snap X-Treme  
 2 Dura-White stones (CN1/FL2)  
 2 CompoSite / CompoSite Fine midpoint each  
 4 CA mandrels, steel  
 PN N0511



### Super-Snap X-Treme

#### Standard Disk Kit

50 pcs. each red and green standard disks  
 PN 0506

#### Mini-Disk Kit

50 pcs. each red and green mini disks  
 PN 0507

## Super-Snap

	Contouring		Finishing				Polishing		Super-polishing	
<b>Super-Snap</b>										
50 pcs. / box	L506	L507	L508	L509	L528	L522	L501	L519	L502	L521
Colour / grit	Black / coarse		Violet / medium				Green / fine		Red / superfine	



### Super-Snap Disk Kit

100 standard disks, 80 mini disks  
 2 Dura-White stones (CN1 and FL2)  
 1 CompoSite Fine midpoint  
 4 CA mandrels, steel  
 PN N0510

### Super-Snap Mini-Kit

32 standard disks, 16 mini disks  
 1 CompoSite Fine midpoint  
 1 CA mandrel, steel  
 PN 0505

### Mandrels

6 FG mandrels, steel  
 PN 0438

6 CA mandrels, steel  
 PN 0439

100 CA mandrels, resin  
 PN 0440



**SHOFU INC.** 11 Kamitakamatsu-cho, Fukuine, Higashiyama-ku, Kyoto 605-0983, Japan  
**SHOFU DENTAL GmbH** An der Pönt 70, 40885 Ratingen, Germany, www.shofu.de

SHOFU is a registered trademark of SHOFU INC. All other trademarks and registered trademarks are the property of their respective holders. SHOFU INC. reserves the right to change specifications without notice.